

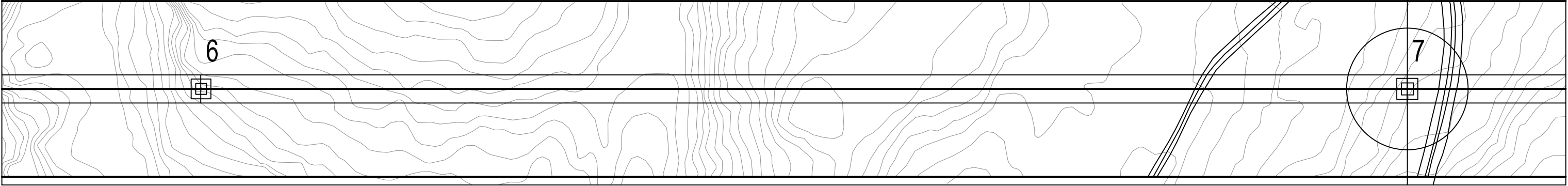
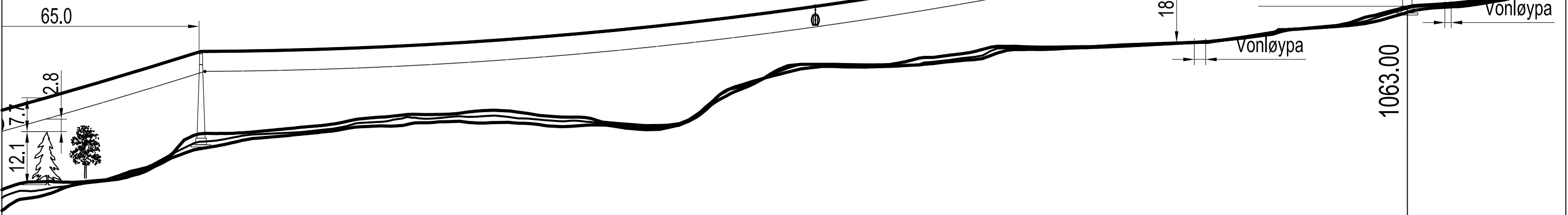
6

Tube length 19.18 m

Tube Angle 0°

27.35 m

0°



BEB	1	2	3
------------	----------	----------	----------

XR: 0.00 m	6.06 m	7.06 m	14.12 m
ZR: 11.92 m	0°	5°	5°
Bottom Station			
Station level 7.70 m			

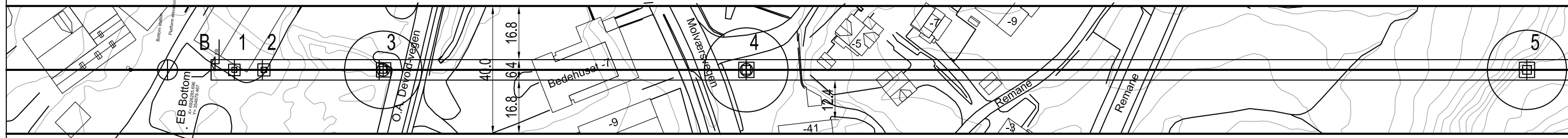
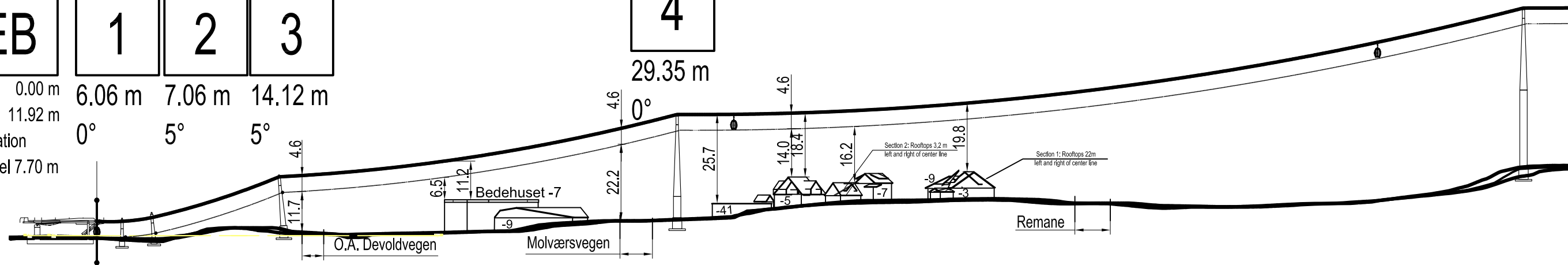
4

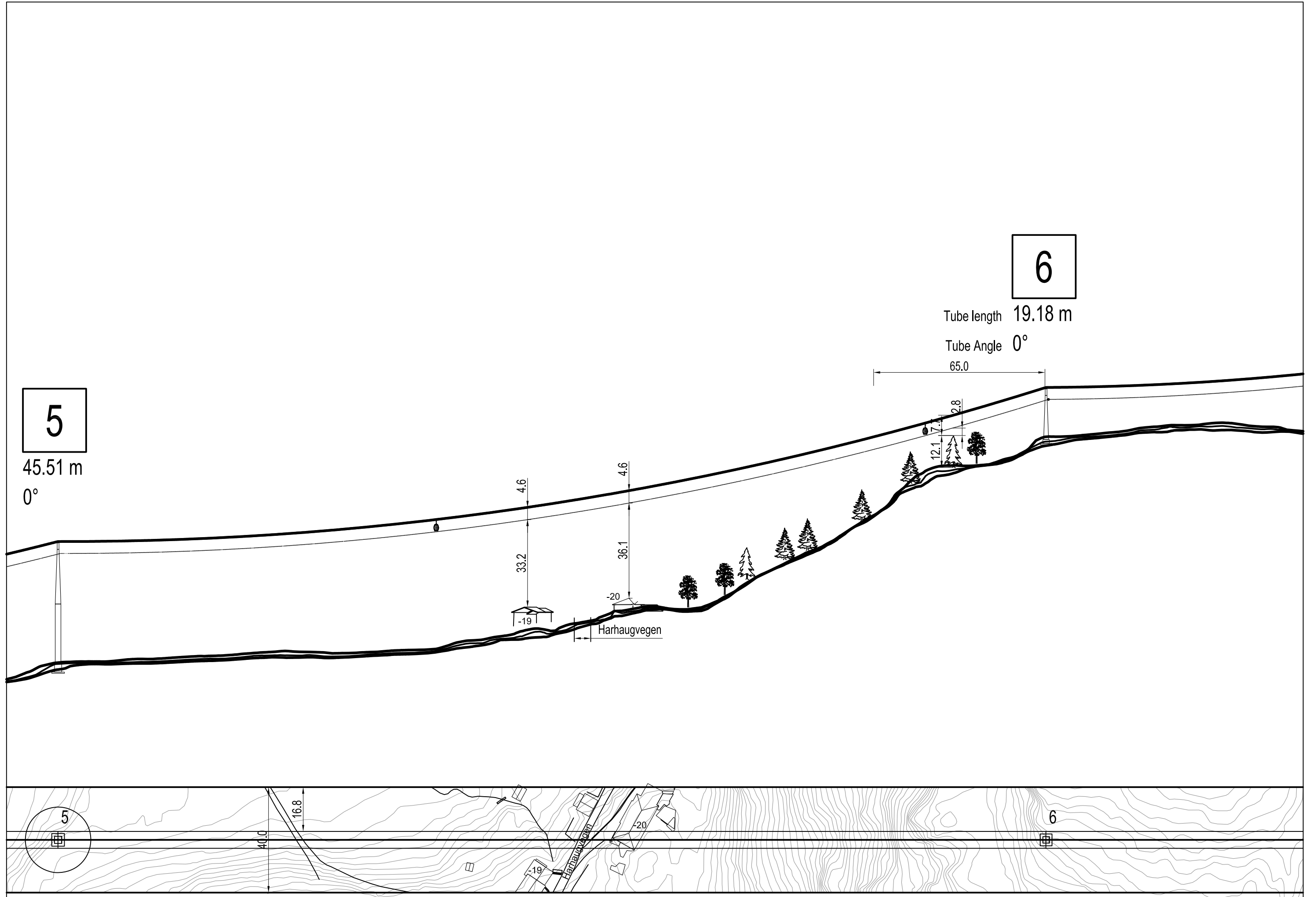
29.35 m

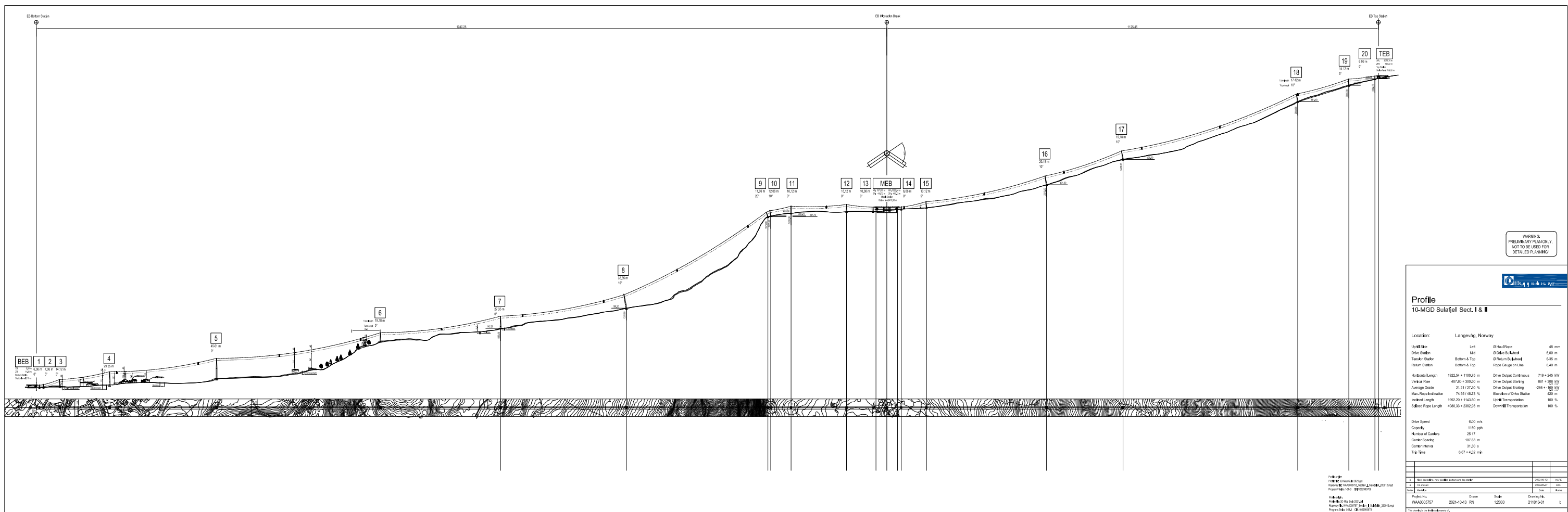
5

45.51 m

0°







WARNING:
PRELIMINARY PLAN ONLY,
NOT TO BE USED FOR
DETAILED PLANNING



Profile
10-MGD Sulafjel Sect. I & II

Location: Langevåg, Norway

Upst. Elev.	Left	Ø Road/Rope	48 mm
Down Station	484	Ø Drive R. R. R. R. R.	6.35 m
Tension Station	Bottom & Top	Ø Return R. R. R. R.	6.35 m
Return Station	Bottom & Top	Rope Gauge on Line	6.40 m

Horizontal Length	1922.54 + 1100.75 m	Drive Output Continuous	719 + 245 kW
Vertical Rise	437.00 + 300.20 m	Drive Output Starting	881 + 300 kW
Average Grade	21.21 / 23.50 %	Drive Output Stopping	298 + 100 kW
Max. Rope Inclination	74.55 / 68.73 °	Elevation of Drive Station	420 m
Inclined Length	1992.20 + 1142.20 m	Upst. Transportation	100 %
Stalled Rope Length	4082.20 + 2282.20 m	Downst. Transportation	100 %

Drive Speed	6.80 m/s
Capacity	1150 gph
Number of Cables	25 / 17
Cable Spacing	102.81 m
Cable Interval	31.20 m
Tip Time	6.67 + 4.32 min

Project No. WAA000257
 Date: 2021-10-13
 Scale: 1:2000
 Drawn By: [Name]
 Checked By: [Name]

BEB

1

2

3

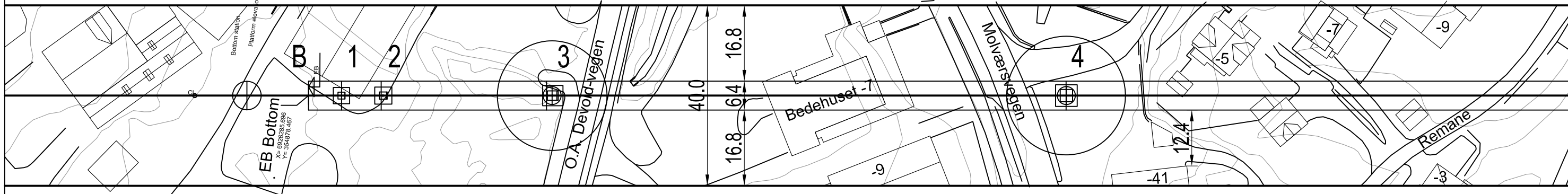
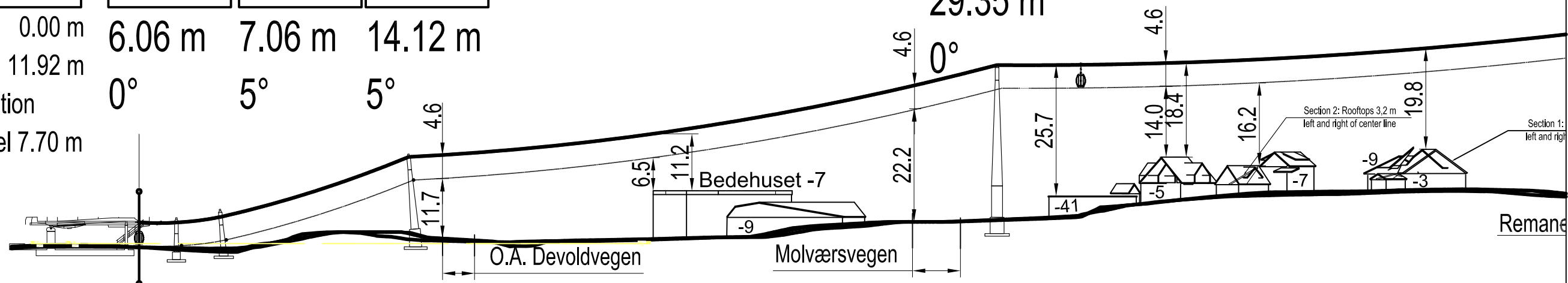
4

XR: 0.00 m
ZR: 11.92 m
Bottom Station
Station level 7.70 m

6.06 m
7.06 m
14.12 m
0°
5°
5°

29.35 m

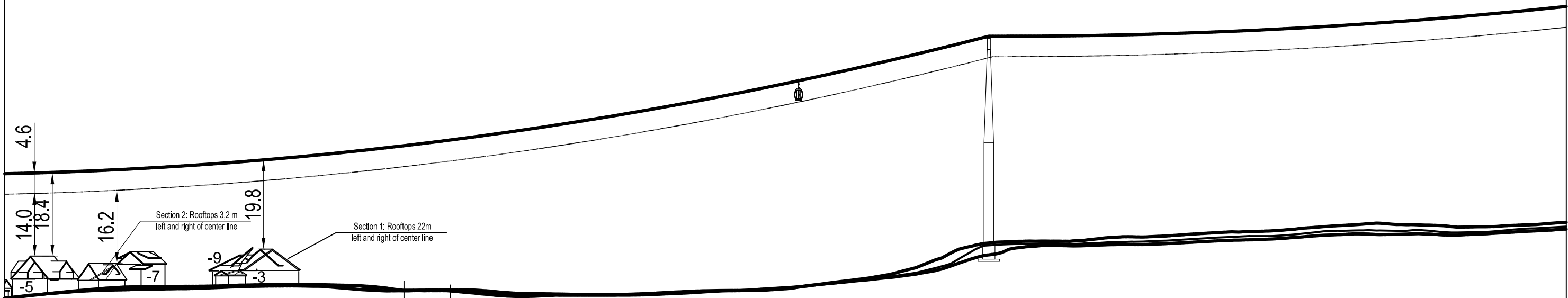
0°



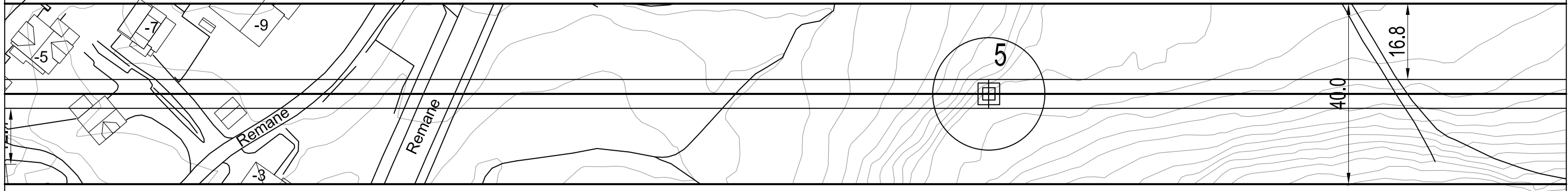
5

45.51 m

0°



Remane



40.0

16.8

5

Remane

Remane

6

Tube length 19.18 m

Tube Angle 0°

65.0

